

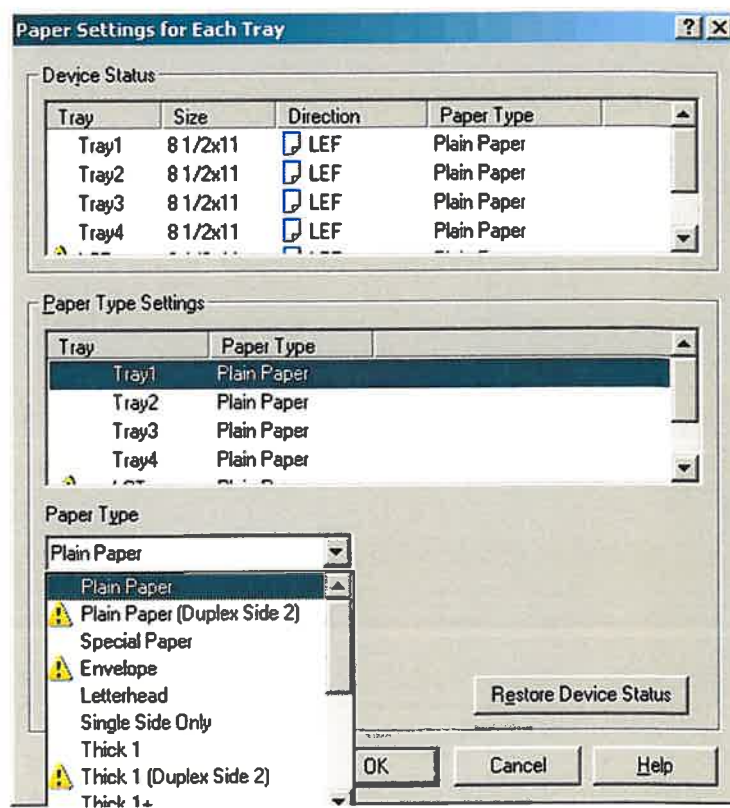
Paper Types and Sources

This copier has the capability to print to many types of media located in any of the numerous paper sources equipped on each model. The paper source settings in the print driver must match those onboard the copier in order to successfully print.

For instance, the driver is set by default to automatically choose the drawer of the copier that best matches the job that is output from the copier.

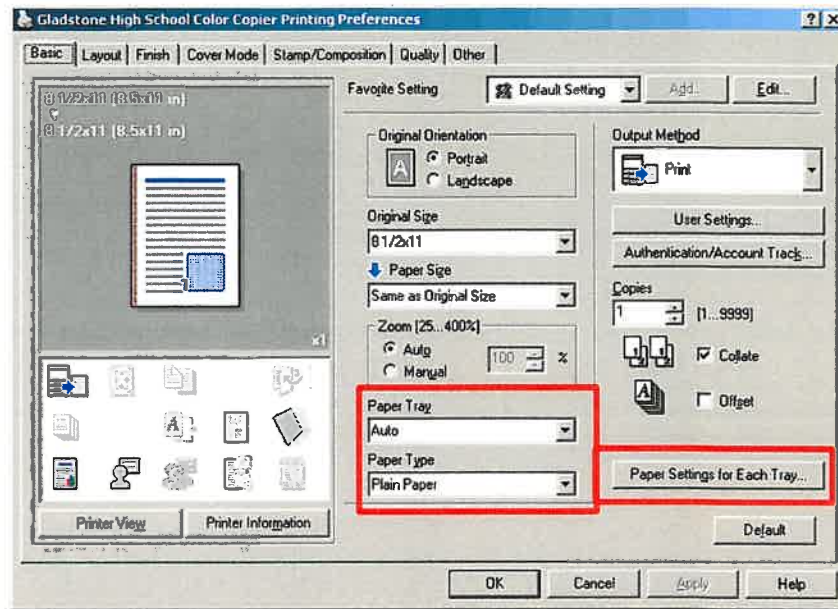
It is possible to override these default settings, forcing the copier to print the job exactly how you tell it. Manually forcing a job to print to a specific tray and specific paper type and size could result in the copier being unable to print your job. For instance, if you tell the copier you want 11X17 extra thick (Thick 3) paper printed from drawer number one, then the copier will hold that job as unable to print until someone puts Thick 11X17 paper in drawer one and configures the paper settings on the copier to match. This scenario could result in someone deleting your job because it is interfering with their own. To prevent this, make sure the paper size, type, and source all match the settings on the copier, or use the auto setting.

These are the interfaces to manually pick a paper size, type, and source. Start by choosing "Paper Settings for Each Tray". Make each tray in the print dialog match that which is configured on the copier by clicking "Restore Device Status".



After you ensure these settings match those of which are on your copier, click the "Restore Device Status" to update the current configuration that is on the copier. Please note that this could change from use to use if people make changes at the copier.

In order to print to the copier with the settings that are currently enabled at the device, simply choose a "Paper Tray" and the driver will automatically set the paper type to what is currently in the copier.



It is possible to contradict these settings by manually settings the "Paper Setting for Each Tray", however keep in mind that the copier will most like fail to print your job, which will hold the job in the print Queue until the failure condition is set. If you wish to contradict the settings, please use "Password / Secure Print" in order to store the job until you get to the device to make the paper trays match the settings on the job.