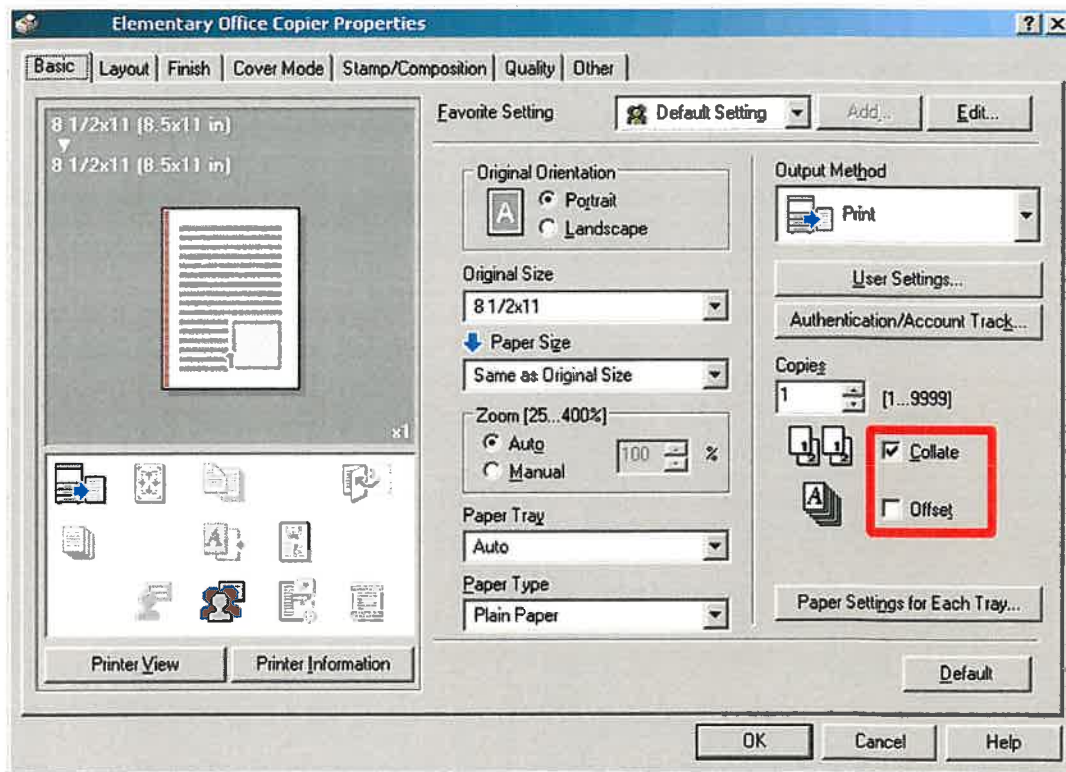


Sorting and Grouping

You can sort or group the output from your computer. To use this feature, click the "properties" button after you have selected your desired output device.

The following dialog will appear. Check or clear the checkbox next to "Collate" as indicated below. Notice how the graphical representation will change to the left of the check box to show you the output order.



Only the collate button in the driver should be used. Uncheck the collate button in your application if you are having difficulties sorting and grouping as sometimes the two will not be relational, dependant on the settings in the application.