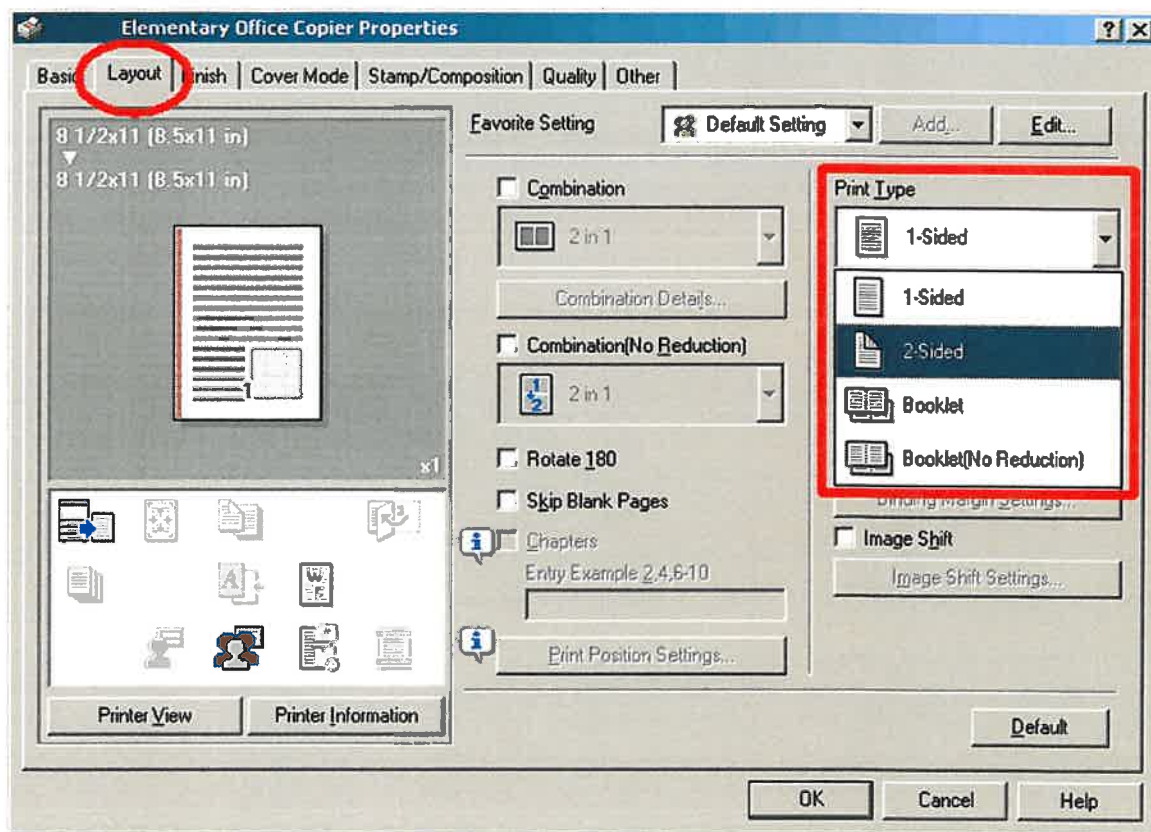


Two Sided Printing

You can print two sided directly from your computer. To use this feature, click the "properties" button after you have selected your desired output device.

The following dialog will appear. Choose "Double Sided" from the "Print Type" dropdown menu as shown below. Notice how the graphical representation will change in the left hand pane to show you which way the paper will be flipped. If this is incorrect, use the "Binding Position" drop down menu below the 2- sided menu to adjust this.



The dialog boxes will close after you choose "OK". Your output will now be two sided for this print session.