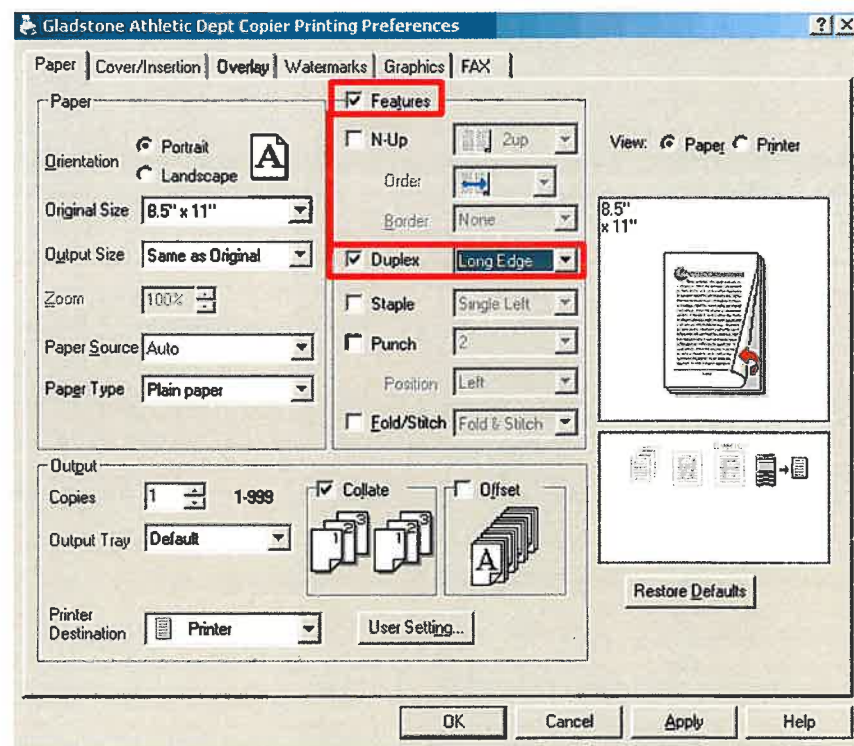


Duplexing (Back to Back)

You can print two sided directly from your computer. To use this feature, click the "properties" button after you have selected your desired output device.

Click the "Features" checkbox to enable the advanced features of the BizHub 7235. Then click "Duplex" and choose the binding order of your job output. When you change the binding order you will notice the graphic change to help you get the orientation right.



Jobs that are outputted as shown above will be printed on both sides of the paper.